

## White paper - Policy Template Editor

The Policy Template Editor is indispensable if you use applications in a network with Windows 9x/Me or XP/2000/NT workstations and Windows Server 2003/2000 or NT4 as network operating system.

### The Registry

In order to appreciate the importance of the Policy Template Editor it is necessary to have some knowledge of the settings of Windows 95 and Windows NT. With Windows NT Server, NT Workstation and Windows 95 settings of computers, users (singly or in groups), applications, printers and similar are filed in the *registry*. Appendix 1 shows a screen image of the registry with examples of possible settings. The registry can be compared to the .ini files of Windows 3.11.

How can settings be placed in the registry? One possibility is to use the *registry editor* (see appendix 1). This is comparable to processing the 'ini files' of Windows 3.11. The advice of experts is not to do this, because even for an experienced network manager it is impossible to know exactly what a single one of the hundreds of possible settings entails. Incorrect settings can have disastrous effects on the stability of the PCs and the network.

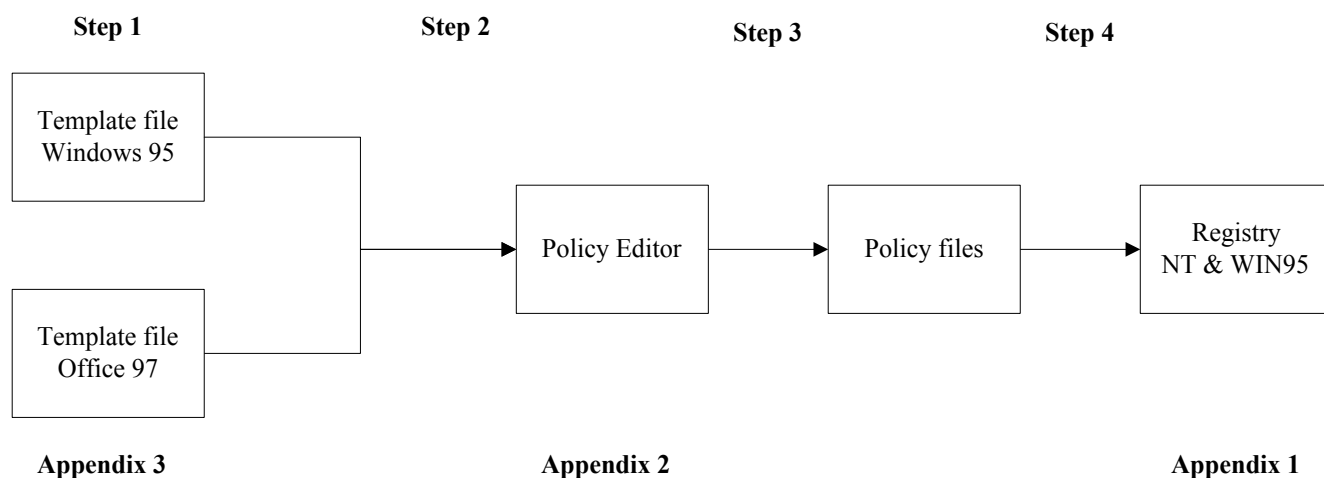
### Policy files

Another possibility is to make use of what are called *policy template files*, the *policy editor* and the *policy files*.

1. Some policy template files are delivered as standard with Windows 95 and Windows NT. The policy template file contains the specifications of possible settings in the registry. An example is the template files of Office 97. Appendix 3 shows an example of the contents of a template file.
2. The policy template file is read by the policy editor. Appendix 2 shows an example of the contents of the policy editor.
3. Using the policy editor the manager makes a policy file in which the settings (for which the possibilities are indicated in the template file) have been given a specified value. The policy file may be specific to a user, a group of users and computer systems.
4. As soon as a user logs in the registry is automatically filled with the settings from the policy file.

We show this in the flowchart below.

### Flow chart for inputting settings W-NT/W'95 (before using Policy Template Editor)



The major objective of using policy files is to allow the network manager, at one central position, to amend the settings for a user or a group of users and computer systems. The benefits of this are beyond telling. For example:

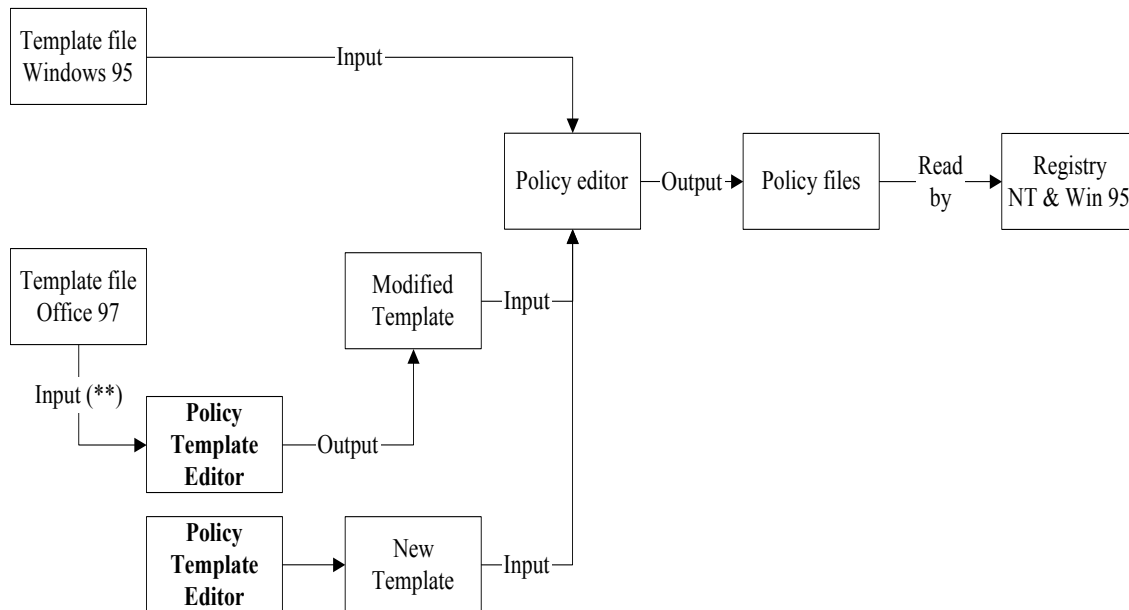
- Several users can work with one and the same PC although each has his own settings.
- A single user can work with several PCs at several locations, everywhere using the his own settings.
- That section of the policy files that relates to the hardware can overrule the settings of the users. This allows the network manager to adjust the screen saver to a delay of 5 minutes at some of the PCs in the network, overruling a user setting for this feature.
- A network manager can centrally manage PCs, users and applications. This can be compared with the set up of the 'Network Computer' (NC). Thus the manager no longer needs to modify the local settings of every PC (a very time-consuming activity!).

### Policy Template Editor

The greatest disadvantage of the system described above is that the available template files by no means contain all desirable possibilities and that modification of them is extremely complex (see Appendix 3). For that reason managers spend a relatively large part of the time on modifying or creating the template files.

The *Policy Template Editor* allows the network manager himself, very simply and with the use of graphical aids, to make new policy template files or to modify existing ones. The Policy Template Editor then generates the complex template files. The diagram below illustrates this.

## Flow chart for inputting settings W-NT/W'95 (with use of Policy Template Editor)



Explanation:

(\*) unmodified template

(\*\*) existing template to be modified

## Benefits of the Policy Template Editor

The following is one example of the benefits of the Policy Template Editor. Imagine that you are engaged in introducing Office 95 into your organization. For Office 97 Microsoft does supply a fairly complete template consisting of more than 60 pages, but such is not available for Office 95. However, the Tools4ever Editor helps you to create a new template file for Office 95 in less than half a day. Without a template editor this task would cost you more than a week.

Summarizing, the Policy Template Editor gives you a significant time saving:

1. Normally speaking, Do-It-Yourself making or amending small template files takes up to 4 hours, but you can now do such a task in a couple of minutes. For larger template files the time saving is much greater (see example above).
2. Once you have made the template file for, as an example, applications, you can then manage such applications within the network in a simple manner.

## **Downloading the Demo version**

Demo versions of the Policy Template Editor are available on our website. This demo version will work for 30 days with full functionality. However, you cannot save any template files. You can download the demo version via the website <http://www.tools4ever.com/>. If you later decide to keep the program you can purchase it from your reseller.

## **Pricing**

The Policy Template Editor is licensed per user. The various rates are as follows.

<a href="#">Policy Template Editor</a>	entry level	<b>299.00</b>	<b>299.00</b>	<b>190.00</b>
	site license	<b>999.00</b>	<b>999.00</b>	<b>720.00</b>

Policy Template Editor is licensed per administrator. Every administrator using the product is required to have a separate license.

## **Maintenance Contract**

The maintenance contract for the Policy Template Editor is mandatory for the first year. The annual cost of this contract is only 20% of the list price. For this you get the following:

- (1) Right to new versions of the Policy Template Editor. You can always download the latest version from our Website. We shall inform you whenever a new version of the Policy Template Editor is available and what features it contains.
- (3) Guaranteed working of the Policy Template Worker with the latest versions of Windows 2003/XP/2000/NT.

## **Tools4ever**

Tools4ever was founded in 1991 as a Banyan Vines and Windows NT-enhancement specialist. Its most widely known products are the disk quota management product "SpaceGuard", and the user administration suite of tools "UserManagemNT". Tools4ever is a Microsoft Certified Partner and over 2000 companies all over the world use Tools4ever's products

Tools4ever specializes in systems administration enhancements for Windows NT and Windows 2000. Tools4ever is also committed to delivering superior customer support for all its products. Tools4ever has offices in the [USA \(New York\)](#) and [Europe \(UK, France and The Netherlands\)](#).

## **Contact persons**

Tjeerd Seinen  
Sales & Marketing Manager  
[sales@tools4ever.com](mailto:sales@tools4ever.com)

## **General Supply Conditions**

Prices: All prices quoted are exclusive of VAT  
Delivery: Within one week.  
Validity: Prices hold for up to 30 days from date of offer.