



USER MANAGEMENT RESOURCE ADMINISTRATOR

Scripting flexibility made as easy as building blocks - Complex user management for Active Directory and NT

Are you breaking a sweat over the upcoming reorganization of home directories, the arrival of hundreds of students who need to logon and use email, or the implementation of Microsoft Exchange 2003? There's no need to, since User Management Resource Administrator transforms these complex user management operations into easy-to-understand projects which will have you going in no-time.

OVERVIEW

Most network administrators see scripting as the only option where they have total freedom to perform complex user management tasks such as automated user and home directory creation, or mass assigning Microsoft Exchange mail boxes.

User Management Resource Administrator changes all this by providing the same sequence of actions as found in traditional scripting languages, and combining this with advanced features such as pre-configured scripts, automated error handling and logging, and export and printing capabilities.

Visual Scripting Interface - no script knowledge required:

User Management Resource Administrator doesn't require any knowledge of scripting languages such as VBScript or Perl, nor will you ever have to write a single line of code when using it. We have essentially created actions involved in user resource management as building blocks, where you would normally see a separate function or module inside a script.

Pre-configured sample projects:

User Management Resource Administrator ships with free sample projects designed to get you on track immediately. Our sample projects include real-life scenarios in addition to our online scenario library, and support both Active Directory user management including mail box creation, account resources such as home directories and shares. These sample projects contain visual script actions, used to perform various operations such as user creation, mail box creation and folder creation. If there is no sample project that suits your needs, we will supply you with a custom project within one working day for free.

Mass create user accounts and resources:

The visual script actions available in User Management Resource Administrator enable you to perform every possible task needed in user account management. Ranging from mass creating user accounts to additional user-related operations such as home directory and share creation, Exchange mailbox assignment and permission configuration, User Management Resource Administrator puts all of these functions at your disposal using pre-defined actions. Simply drag-and-drop these additional actions to extend your import job.

Automatic username and password generation:

User Management Resource Administrator has built-in routines to generate usernames according to your company policy, and also routines to generate random passwords. Passwords can be generated randomly using security rules such as a set amount of lowercase and uppercase characters, combined with special characters to result in strong passwords. Usernames can be generated using parts of the users full name, for instance first name, middle name and last name.

Whenever the username already exists in the Active Directory, you can configure the name generation algorithm to try adding numbers or characters until the username no longer results in a duplicate. You can also switch to an alternative algorithm to supply a completely unique username.

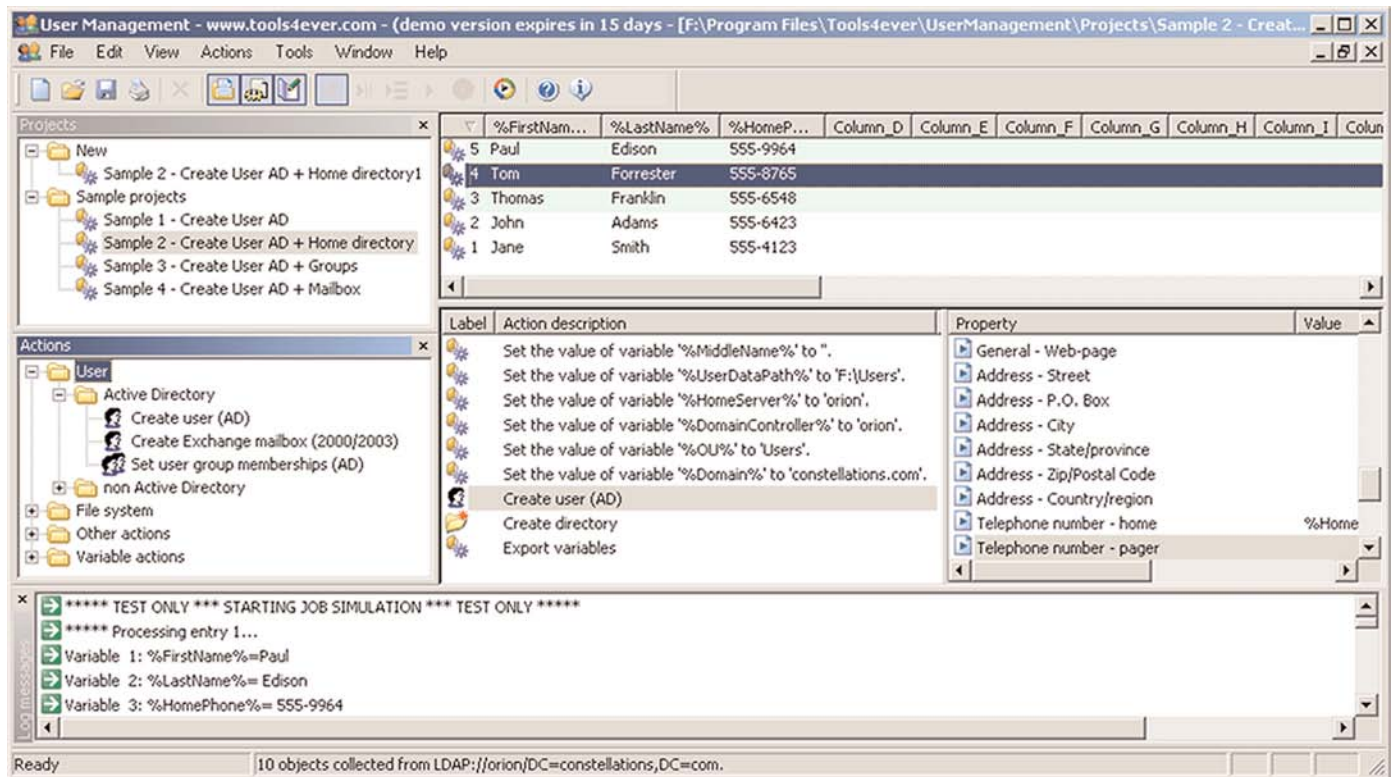
Best of all, you no longer need to supply the username yourself by using scripting or programs such as Microsoft Excel to modify the input CSV files. User Management Resource Administrator includes script actions to export and print the generated usernames and passwords so you can distribute them.

Uses industry-standard CSV format:

User Management Resource Administrator supports the industry standard CSV format, which is compatible with all major office applications. Instead of relying on complex and hard to create LDIF configuration files, User Management can easily use the contents of a CSV file to run the most complex user management task imaginable.

Integrated network overview:

User Management Resource Administrator includes a powerful network browse tree which can access all parts of an Active Directory and Windows NT4 SAM. You can instantly view user accounts, groups, servers and much more. Even more powerful, the data listed in this network tree can be used to run import jobs. Simply select an organizational unit and use the display function to load all data into the input data window.



FEATURES

User Management Resource Administrator:

- > Supports all editions of Windows NT - XP - 2000 - 2003.
- > Supports Active Directory.
- > Supports Windows Terminal Server.
- > No script knowledge required.
- > Pre-configured scripts.
- > Complex username and strong password generation.
- > Integrated network overview.
- > Flexible mapping of input data to script actions.
- > Drag-and-drop actions to compose a script.
- > Integrated testing and simulation facility.
- > Directly run import jobs on OU or domain level, no need for CSV files.
- > Customizable field formatting and variable mapping.

Active Directory account management

- > Create user and setup basic attributes.
- > Edit user and basic attributes.
- > Delete user.
- > Set - manage remove group membership.
- > Create - edit - remove Exchange 2000 - 2003 mail box.
- > Manage common Active Directory attributes.
- > Manage specific Active Directory attributes.
- > Move user accounts.
- > Search users in Active Directory.
- > Setup - remove Terminal Services settings.

Windows NT4 - local computer accounts

- > Create user and setup attributes.
- > Edit user and attributes.
- > Delete user.
- > Set - manage - remove group memberships.
- > Setup - remove Terminal Services settings.

File system management:

- > Create directory (home-, profile-, other).
- > Delete directory.
- > Setup directory and file security permissions.
- > Copy directory and permissions*.

Additional actions and functions:

- > Execute command line.
- > Extensive logging in test- and real - mode.
- > Script control actions (goto - if).
- > Data management actions (mapping - format etc.).
- > Print reports and script input data.



WWW.TOOLS4EVER.COM