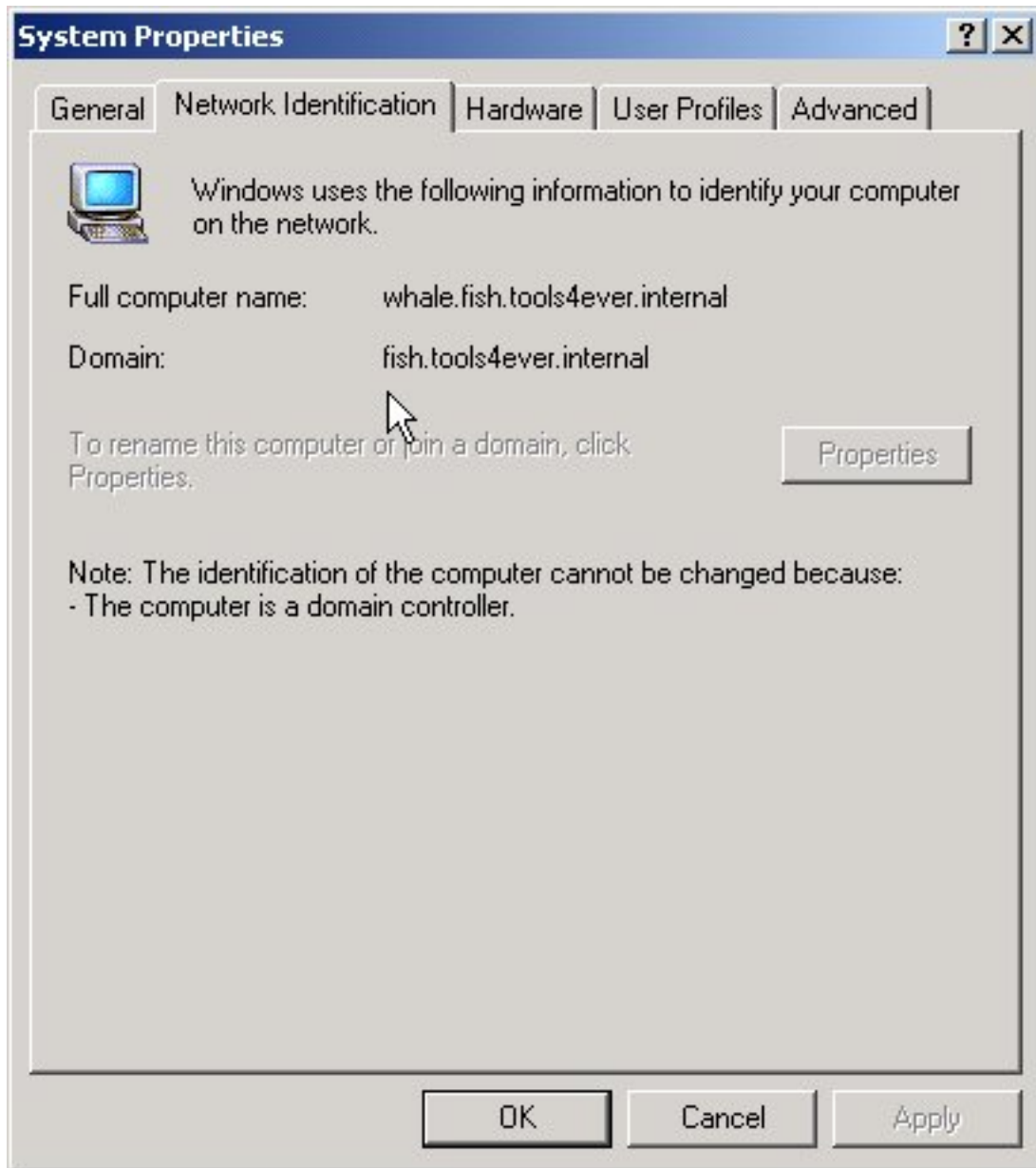
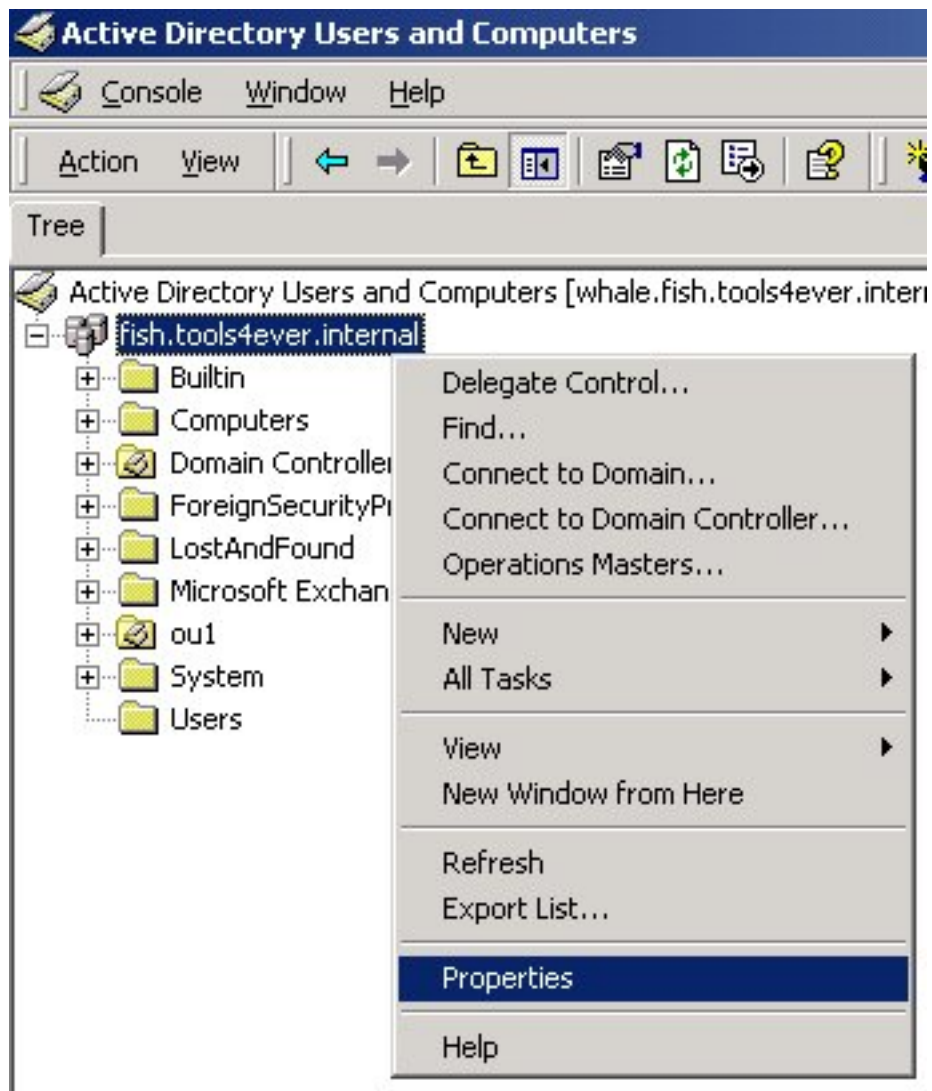


How to find the NETBIOS domain name of the computer running the MonitorMagic service (Windows 2000)

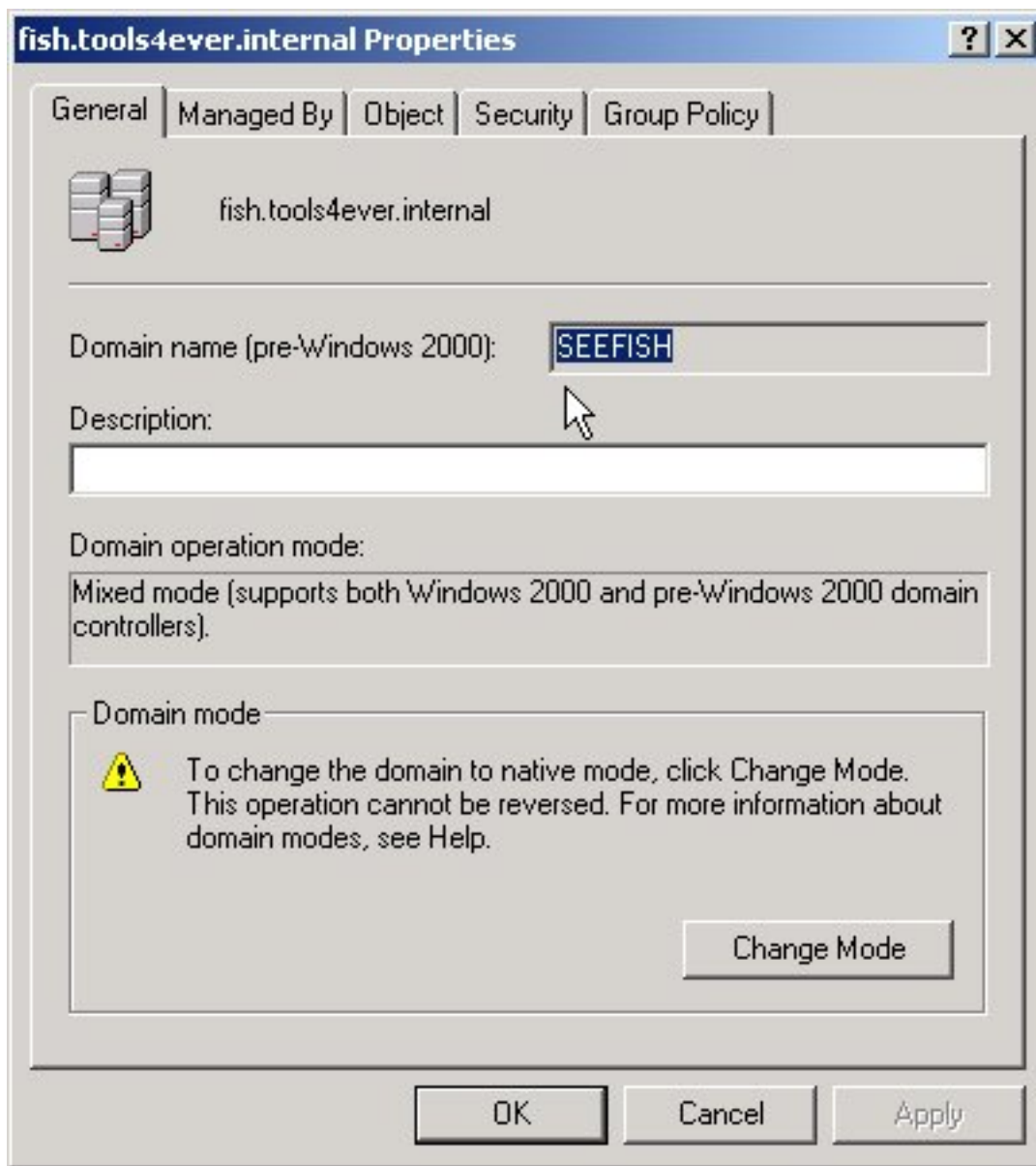
To find the NETBIOS domain name of a computer running Windows 2000 you need to know the DNS domain name. Start the **Control Panel** (*Start, Settings, Control Panel*) and select the **System** applet. The **System Properties** window appears. Select the **Network Identification** tab.



The domain field shows the DNS name of the domain. Next, log on to a Windows 2000 domain controller of the domain and start the **Active Directory Users and Computers** application (*Start, Programs, Administrative Tools, Active Directory Users and Computers*). In the left part of the window right click the DNS domain name, select the menu option **Properties**.



The properties window of the domain appears. The field **Domain name (pre-Windows 2000):** shows the NETBIOS domain name.



By default, the first part of the Windows 2000 DNS domain name (**fish** in **fish.tools4ever.internal**) is equal to the NETBIOS domain name. But this is not always the case (**SEEFISH** instead of **FISH**).