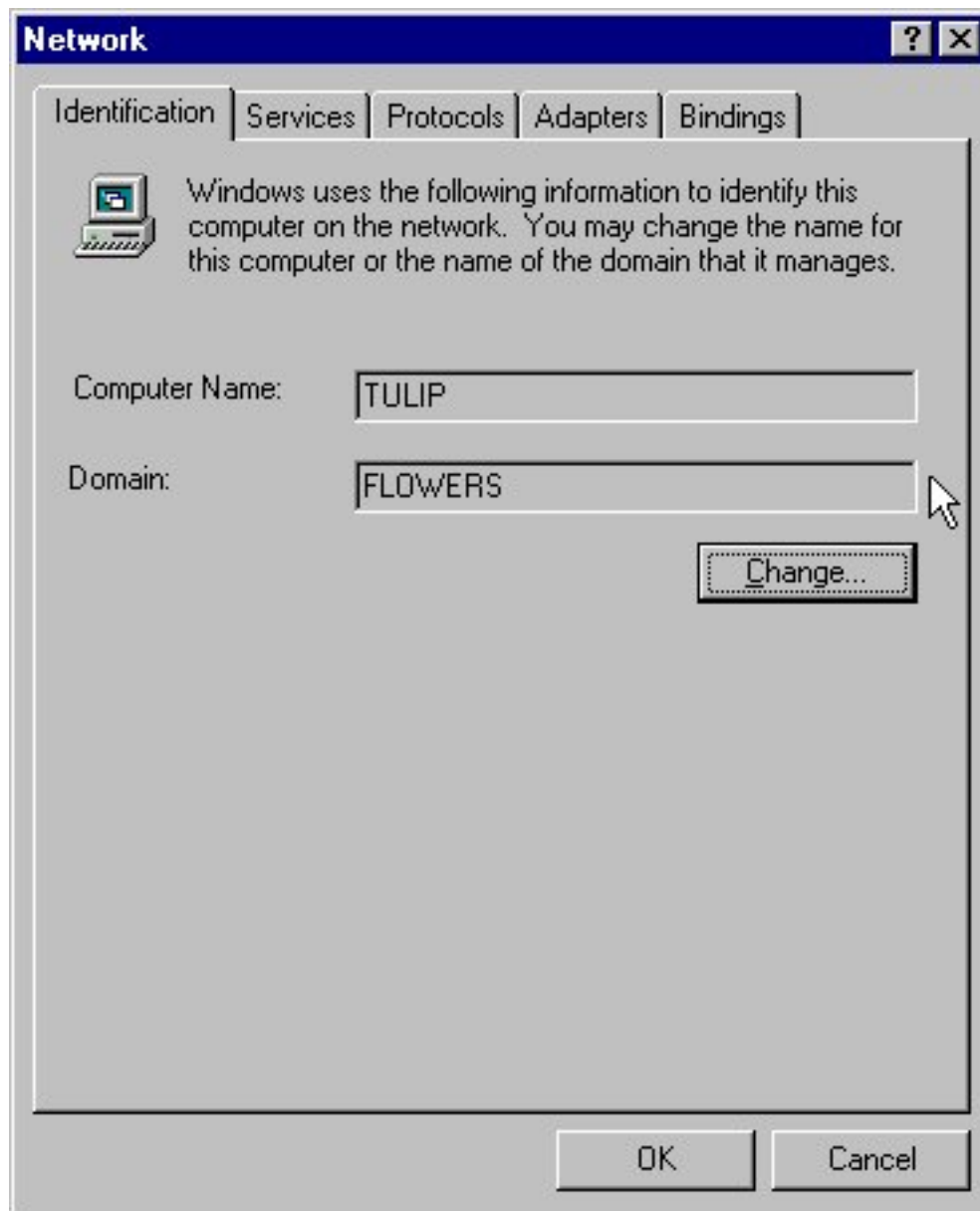


## How to find the NETBIOS domain name of the computer running the MonitorMagic service (Windows NT 4.0)

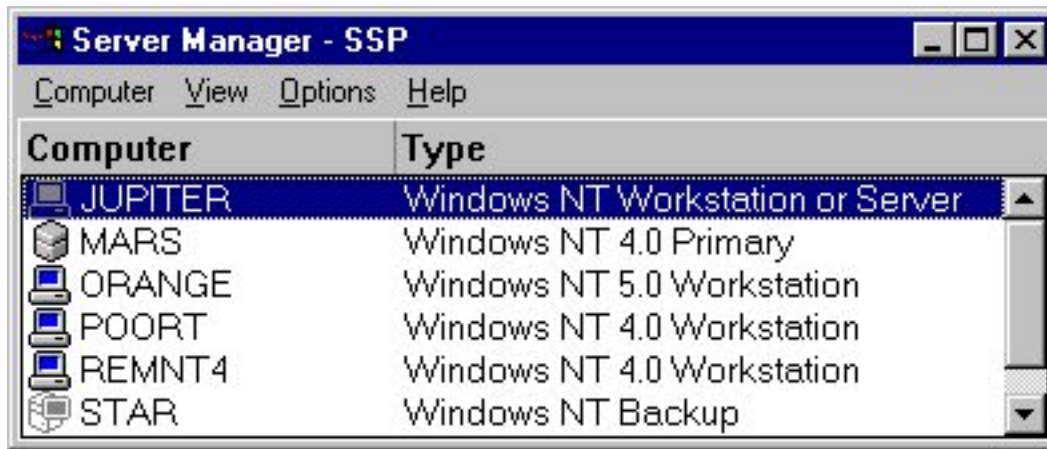
### Finding the domain name of a local computer

To find the domain of a local computer, log on to the computer as an administrator. Start the **Control Panel** with the menu options **Start, Settings, Control Panel**, and start the **Network** applet. The **Identification** tab shows the name of the computer and the NETBIOS domain name.

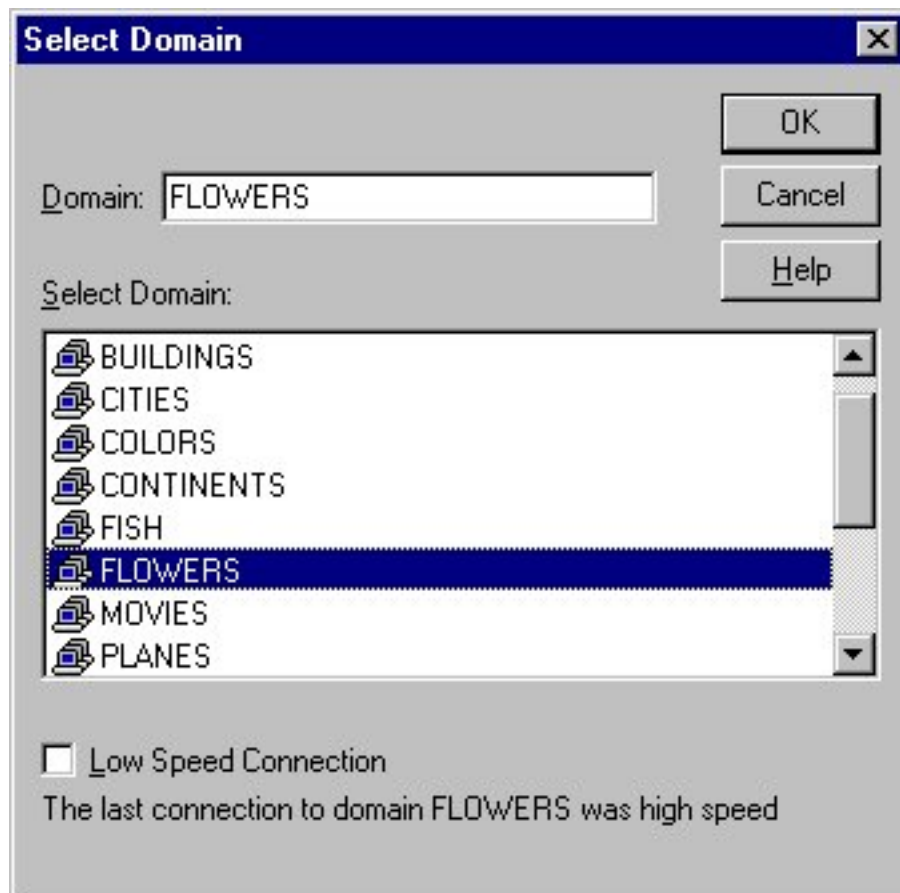


### Finding the domain name of a remote computer

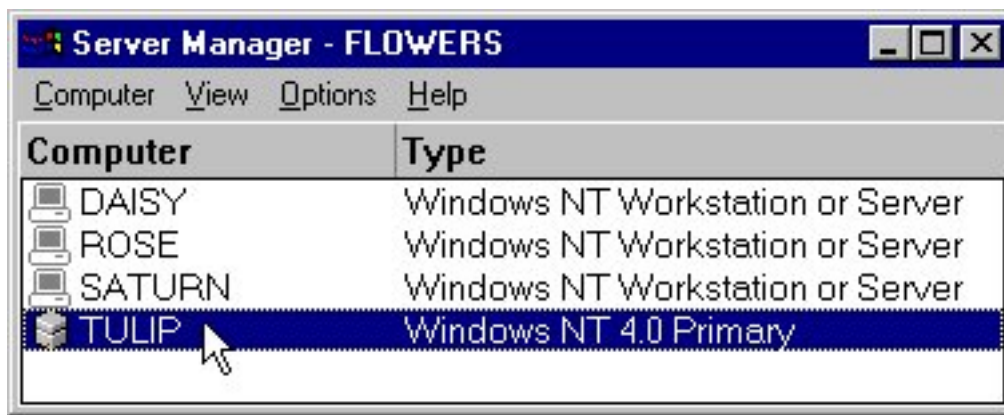
To find the domain name of a remote computer, log on to a Windows NT 4.0 server as an administrator of the domain. Start the **Server Manager** application with the menu options **Start, Programs, Administrative Tools, Server Manager**. The **Server Manager** application connects to the domain of the logged on user and shows all computers (servers and workstations) that are a member of the domain.



If the computer is not shown, connect to the domain of the computer with menu options **Computer, Select Domain**.



Select the domain, press the **OK** button and confirm that the computer is listed.



In the figures shown, the domain name is **FLOWERS**. If you are not able to find the name of the domain you will need to visit the computer and execute the procedure described at the beginning of this section.