

## **UMRA – Automatically Deleting User Accounts And Associated Resources**

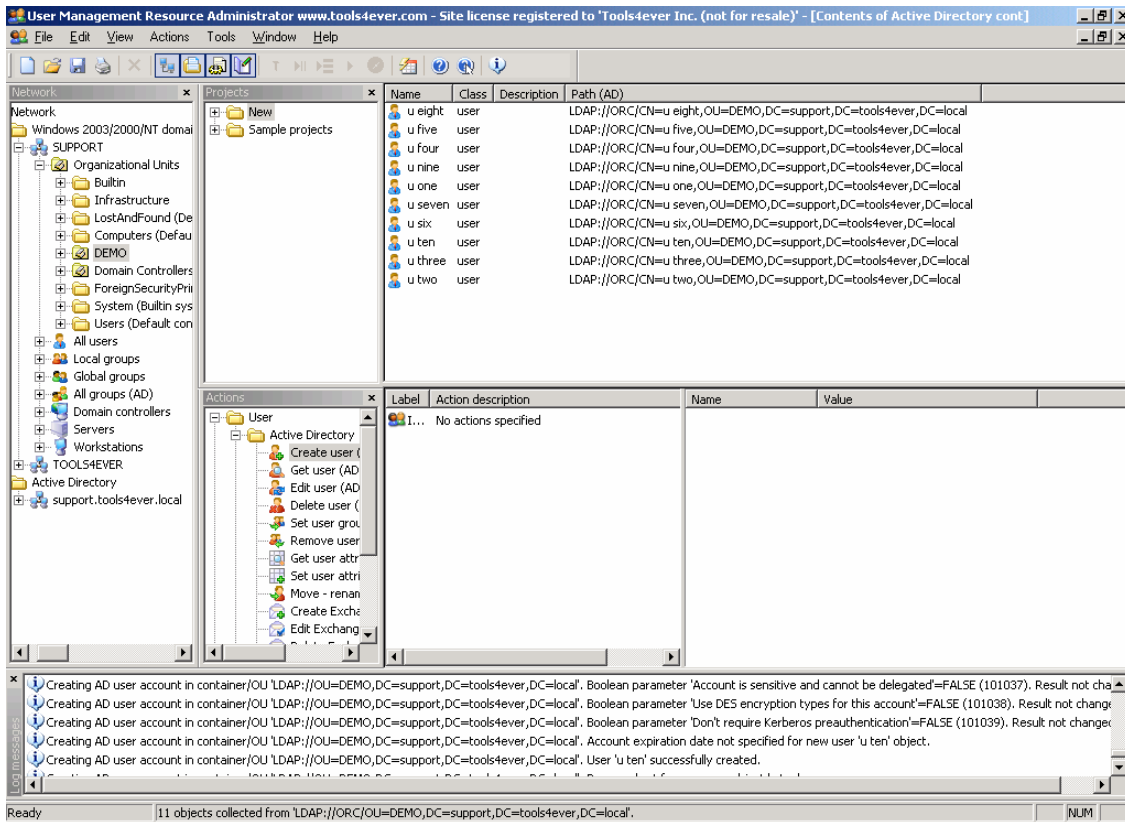
Maintaining the Active Directory is often a time consuming task, especially in large organizations. Active Directory maintenance must be performed every time a new employee joins the company and every time an existing employee leaves. Typically, creating accounts and associated resources takes less time than deleting them. When a new user account is created, and that user logs on for the first time, some of account's resources are created automatically (given the account was setup properly,) i.e. home directory and profile directory.

Deleting a user account is a more arduous task, as there is more to delete than just the account itself. The user account must be removed from any groups the user was a member of; otherwise an orphaned SID entry appears in the member's lists of the groups in question. Home and profile directories must be manually deleted. If the user in question had an Exchange email account their mailbox must be deleted manually as well. Performing all these actions against any one account can take up to fifteen minutes. The issue only becomes compounded when there are many accounts to delete leading to a significant administrative burden.

User Management Resource Administrator (UMRA) is the elegant solution for dealing with these types of administrative problems. The product can be easily configured to automatically delete user accounts, group memberships, home directories, profile directories, and Exchange mailboxes. Furthermore, no input file is required to drive the deletion process. UMRA has the capability to read user information directly from the Active Directory.

The following procedure outlines how to configure UMRA to automatically delete user accounts and all associated settings:

- 1.) Open UMRA and choose File/New to begin a new project
- 2.) Use the Network view to navigate to the Organizational Unit (OU), which contains the user accounts to be deleted
- 3.) Right-click the OU in question and choose "Display." The project now appears similar to the following:

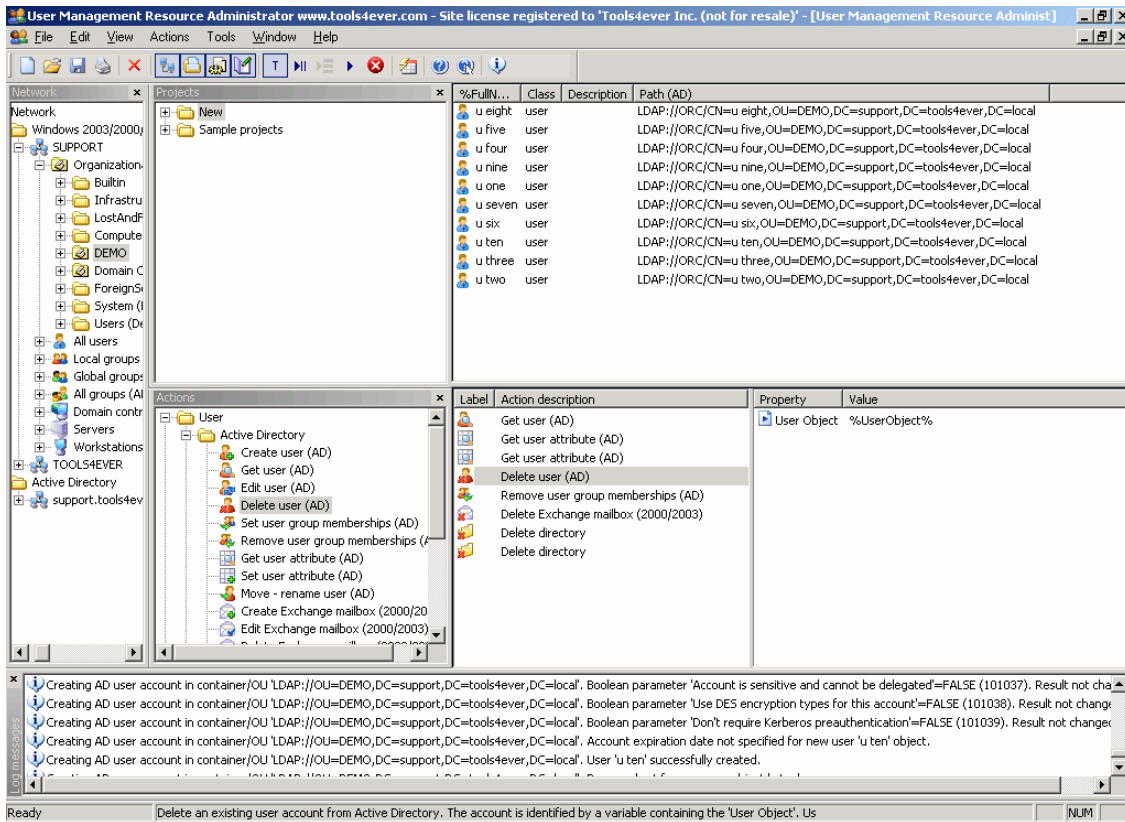


4.) Drag and drop the following actions, IN THE FOLLOWING ORDER, into window with the column heading "Action description:"

- >Get user (AD)
- >Get user attribute (AD)
- >Get user attribute (AD)
- >Delete user (AD)
- >Remove user group memberships (AD)
- >Delete Exchange mailbox (2000/2003)
- >Delete Directory
- >Delete Directory

Right-click the Name column and choose %FullName%

The project now appears similar to the following:



5.) Now that the actions have been added to the project the properties of each action must be configured. Action properties will display in pane to the right on the action once and action is highlighted. The following explains the function of each action and what properties need to be configured for it:

### Get user (AD)

This action retrieves the user action in question. User management cannot delete a user until it has retrieved the user it will delete.

#### Properties to Configure

Domain: Replace the default value of %Domain% with the DNS name of the domain the accounts reside in, e.g. support.tools4ever.local

Organizational Unit-Container: Enter the name of the OU, which contains the user accounts to be deleted. If the OU is a sub-OU of users called accounts enter users/accounts

Full name: Leave this property in its default state

Username: Double-click the property and choose "Do not specify a value for this property." Choose OK.

### Get user attribute (AD)

This action will retrieve the path to the user's home directory. The value of the path is then stored in a variable called %HomeDirectory% for later use.

#### Properties to configure

LDAP attribute display name: Double click the property and choose the Value radio

button. Now choose homeDirectory from the drop-down, choose OK.  
Attribute value: Double-click the property and choose the Output tab. Make sure "Store this value in the following variable" radio button is selected. Replace the default entry, %AttributeValue%, with %HomeDirectory%, choose OK.

#### **Get user attribute (AD)**

This action will retrieve the path to the user's profile directory. The value of the path is then stored in a variable called %ProfileDirectory% for later use.

Properties to configure

LDAP attribute display name: Double click the property and choose the Value radio button. Now choose profilePath from the drop-down, choose OK.  
Attribute value: Double-click the property and choose the Output tab. Make sure "Store this value in the following variable" radio button is selected. Replace the default entry, %AttributeValue%, with %ProfileDirectory%, choose OK.

#### **Delete user (AD)**

This is the action that actually deletes the user account. There are no properties to configure.

#### **Remove user group memberships (AD)**

This action removes the user from all groups he/she is a member of. There are no properties to configure.

#### **Delete Exchange mailbox (2000/2003)**

This action deletes the Exchange mailbox. There are no properties to configure.

#### **Delete directory**

This action will delete the home directory of the user

Properties to configure

Directory name: User the drop-down to specify %HomeDirectory% as the directory name, choose OK.

#### **Delete directory**

This action will delete the profile directory of the user

Properties to configure

Directory name: User the drop-down to specify %ProfileDirectory% as the directory name, choose OK.

This is a good point in time to save your work. Choose File/Save as... to save the project.

6.) Project configuration is now complete. Now it's time to confirm that all users displayed in the project should be deleted. UMRA can remove users from the project in one of two ways. Users can be removed from the project by highlighting them, right clicking, and choosing Remove. There is also a "Run selection" option in UMRA's toolbar. Selecting a set of users and choosing the "Run selection" option will force UMRA to take action against only the users which were selected.

7.) Run the project in test mode, designated by the "T" button on the toolbar. UMRA logs every action it takes in real-time; the log information is seen at the bottom on the project in the log pane. When the test has been completed scroll through the log to ensure no errors are present.

Assuming the test ran successfully remove test mode and delete the users.

It is important to understand that a new project does not need to be created every time additional users and resources need to be deleted. Any project that was saved will appear in the Project pane. The project can be used to easily delete different users and resources by opening the project, right-clicking a different OU, choose display, choose Overwrite.

Finally, most organizations do not have a need to delete all the user resources specified in this article. The UMRA project can easily be adapted to different needs by removing the actions that aren't relevant.

**Please do not hesitate to contact support with questions.**

[support@tools4ever.com](mailto:support@tools4ever.com)

[www.tools4ever.com](http://www.tools4ever.com)

[forum.tools4ever.com](http://forum.tools4ever.com)