

# MonitorMagic Documentation

## Configure Custom Keywords

Date: February, 2004  
Author: Arnout van der Vorst

### Introduction

This document is intended to detail the procedure for configuring custom keywords in MonitorMagic, which can be used as global variables for example to define a target e-mail address for notifications. The advantage of using keywords is that when this e-mail address changes, you only need to modify the contents of the keyword assigned to this address and all other data will be updated automatically.

## 1.1 MonitorMagic Console & Agent

A MonitorMagic installation always consists of two parts; console and agent. Where the console is installed using the downloadable InstallShield package from the Tools4ever website, the agent is installed and controlled exclusively using the console.

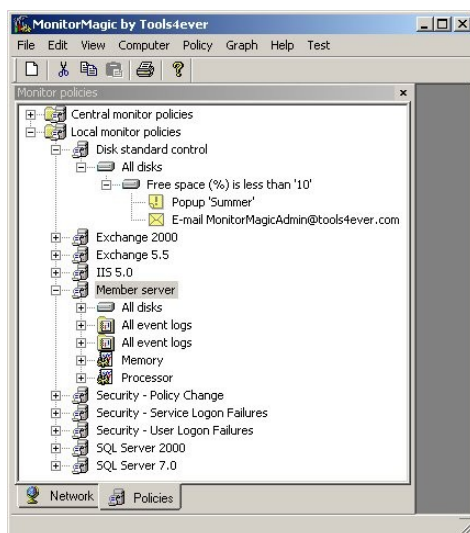
## 1.2 Access the MonitorMagic Agent Configuration

To change configuration settings, you use the MonitorMagic user interface client application. To configure the MonitorMagic service, activate the Network view window and browse to find the computer running the MonitorMagic service. Right click the computer name and select menu option Configure service. A window with multiple tabs is shown. Each tab corresponds with a certain tasks that can be configured. Navigate to the "Custom keywords" tab to configure custom keywords.

## 1.3 Set Custom Keyword Values

Keywords must have a name and value assigned to them. Keyword names must be enclosed by % characters, for example %SMTPALARM%. Assign a value, for instance helpdesk@company.com. When acknowledging this dialog, changes are saved automatically.

## 1.4 Use Keywords in Policies



MonitorMagic custom keywords can be used as variables in policies, for instance as definition of a global e-mail address to receive notifications. As you see in the screenshot, a policy "Disk standard control" has been configured, containing a monitor that sends notifications to a hard-coded email address when the 10% threshold has been reached.

This e-mail address can be replaced with a keyword, for instance %SMTPALARM%, which has a value defined in the MonitorMagic service configuration. This allows you to rapidly apply new e-mail addresses to all configured alarm actions instead of editing multiple alarm actions manually.